



## Foal Sitting

- Be on time
- Find an alternate
- After changing
  - Sign in – NICU nursing station
- Wear your name tag
- Breaks



---

---

---

---

---

---

---

## Foal Sitting NICU Nurse Outline Duties

- Turning recumbent foals
- Changing bedding
- TPR
- Milking mares
- Monitor placement of lines
- Monitoring for alarms
- Restraining foals



---

---

---

---

---

---

---

## Foal Sitting

- Familiar with treatments
- *Do Not* administer medications
- Do not change
  - Ventilators
  - Oxygen
  - Fluid pumps
- Bring
  - Pen
  - Stethoscope
  - Penlight



---

---

---

---

---

---

---

## Medical Record

- Progressive
  - Case, owner
  - Date, time
  - Signature
  - Be professional
  - Paper color
- Orders
- Fluids
- BP
- Lab data
- ABG
- Dextrose – PCV, TP
- Feeding chart
- Weight chart
- INs/OUTs




---

---

---

---

---

---

---

---

## Experience Log

- All aspects of nursing care
  - Critically ill neonates
- Log of experiences
  - Mandatory experiences
    - TPR
    - BP
    - PCV, TP, dextrose
  - Observation of
    - NE case
    - Septic shock case
    - Ventilatory management
  - Assist with restraint for
    - Catheter placement
    - Arterial blood gas sampling
    - Nasogastric tube placement
  - Perform
    - Mare milking
    - Perform physical therapy




---

---

---

---

---

---

---

---

## Biosecurity and Foal Sitting

- Dress Code
  - Scrubs
    - Yours
    - Ours
  - Footwear
    - Ours
      - Crocs
    - Yours
      - Dedicated
      - Cleanable




---

---

---

---

---

---

---

---

## Biosecurity and Foal Sitting Do's and Don'ts

- Don'ts
  - Don't visit other barns before foal sitting
  - Don't foal sit after other NBC experiences
  - Don't come from your barn to foal sitting
  - Don't go from foal sitting to your barn
- Do's
  - Do wear clean scrubs
  - Do change before you leave or when you get home
  - Do wash your scrubs after each foal sitting session
  - Do clean shoes after foal sitting



---

---

---

---

---

---

---

How do I get in??



---

---

---

---

---

---

---



---

---

---

---

---

---

---



---

---

---

---

---

---

---

---



---

---

---

---

---

---

---

---



---

---

---

---

---

---

---

---

## Shoe Changing Station

- Change foot wear
  - Crocs
  - Bring clean shoes
- Store outside shoes



---

---

---

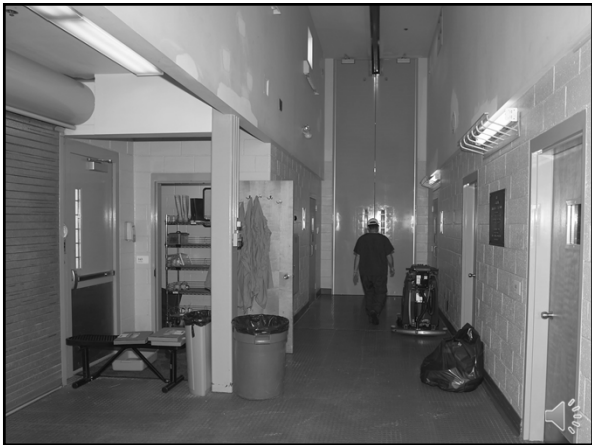
---

---

---

---

---



---

---

---

---

---

---

---

---



---

---

---

---

---

---

---

---




---

---

---

---

---

---

---

---

## Blood Pressure

- Blood pressure monitor
- Cuff
- Push the "NIBP Start"
- Heart rate vs monitor's heart rate
- Series of 3 reading
- Results recorded on BP flow sheet
  - 65/35 (44) 90




---

---

---

---

---

---

---

---

## PCV, TP

- Use the correct microhematocrit tube
- Use a well mixed sample
- Run 2 microhematocrit tubes
- Line up the microhematocrit tube
- Focus TS meter
- TS vs TP
- Are results correct???




---

---

---

---

---

---

---

---

## Dextrose

- Check test strip code
- Do not expose the test strips to air
- Golden grid completely covered



---

---

---

---

---

---

---

---



---

---

---

---

---

---

---

---